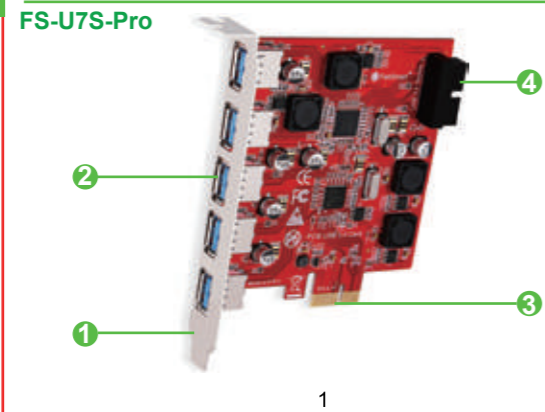
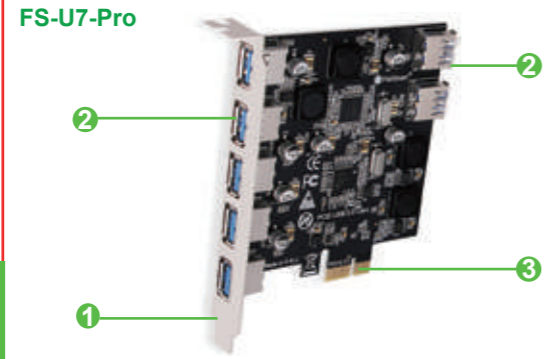




# PCI Express USB 3.0 Expansion Card

Model: •FS-U7-Pro •FS-U7S-Pro  
Site:www.febsmart.com Email:support@febsmart.com



- 1 Standard Size Bracket
- 2 USB 3.0 Interface
- 3 PCI Express X1 Interface
- 4 USB 3.0 19Pin Header

### Product Description:

**FS-U7-Pro** will provide 7 USB 3.0 ports on desktop computer by PCIE X1 slot.Allow conected device get 5Gbps max speed. External 5-ports and internal 2-ports USB-A will help users never run out super speed USB 3.0 ports.Build in FebSmart Self-Powered Technology special designed for high-power consuming device such as HDD/SSD enclosure or industrial level equipments.Mounted with full size bracket works on standard size PCs,NOT works on slim PCs.PCIE2.0 X1 interface design will works on PCIE 1.x,2.x,3.x,4.x protocol and X1,X2,X4,X8,X16 slot.

**FS-U7S-Pro** allow users add 7 USB 3.0 ports(5-Ports USB-A and 1X 19Pin USB 3.0 header) on desktop computers by PCIE x1 slot.The internal USB 3.0 19Pin header will extend 2 more USB-A 3.0 ports for computer internal device or front panel USB 3.0 ports.The external 5-ports USB-A let user never run out super speed USB 3.0 ports.Provide a 5Gbps total bandwidth for all connected USB 3.0 device. Built in FebSmart Self-Powered Technology for high power consuming USB device such as HDD/SSD enclosure or industrial level equipments.PCIE 2.0 X1 design will works on PCIE 1.x,2.x,3.x,4.0 protocol and X1,X2,X4,X8,X16 slot. Full size bracket mounted on USB card,works on standard size PCs,NOT support slim PCs.

### System Requirements:

Driver free on Windows 10,8.1,8(32/64bit) systems.Need to Install driver on Windows Server,XP,7,Vista(32/64bit)system.

### FebSmart Self-Powered Technology:

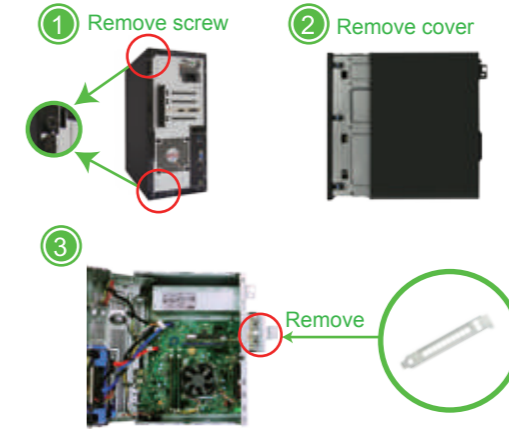
FebSmart Self-Powered Technology is a new solution to add more power supply on USB expansion cards.The old version PCI Express USB cards need to plug a power cable from desktop computers power control center.PCI express slot can provide 75W max almost 12V/6.25A power in total.We add 4X voltage transformer on main-line pick up 12/5A power. Then transfer it to 5V/12A power supply and distribute these power to each USB 3.0 ports,allow each USB ports get 5V/2A max power for connected USB 3.0 device.Most of high power-consuming devices just need 4~8W which means this USB expansion card can light up few the high power-consuming device simultaneously in high speed.To protect data device and users data we build safety electric circuit protector on each USB 3.0 port.Do not worry about data loss,burn storage device.Add super safe and easy install USB 3.0 card on desktop computers,connect more USB device.

### Package List:

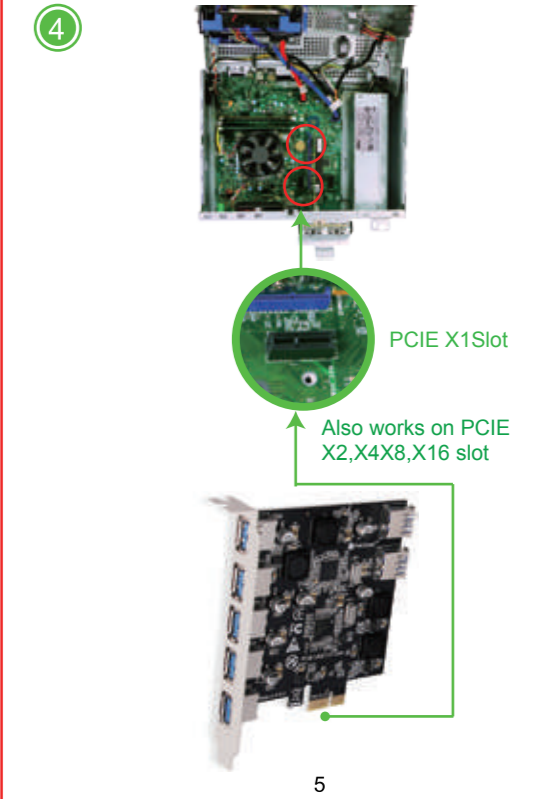
- |                  |                   |
|------------------|-------------------|
| <b>FS-U7-Pro</b> | <b>FS-U7S-Pro</b> |
| 1XFS-U7-Pro      | 1XFS-U7-Pro       |
| 1XUser Manual    | 1XUser Manual     |
| 1XMini CD        | 1XMini CD         |
| 1XMount Screw    | 1XMount Screw     |

### Add USB Card on Desktop PCs:

Step1,Switch OFF PC,unplug computer from main socket,unplug power cord and other connected peripherals.Remove the cover from computer case.



Step2,Find correct PCI Express slot from motherboard, insert USB 3.0 card into an empty PCI-E slot.



Step3,Reattach the computer cover,and put back removed peripherals,power on desktop computer.

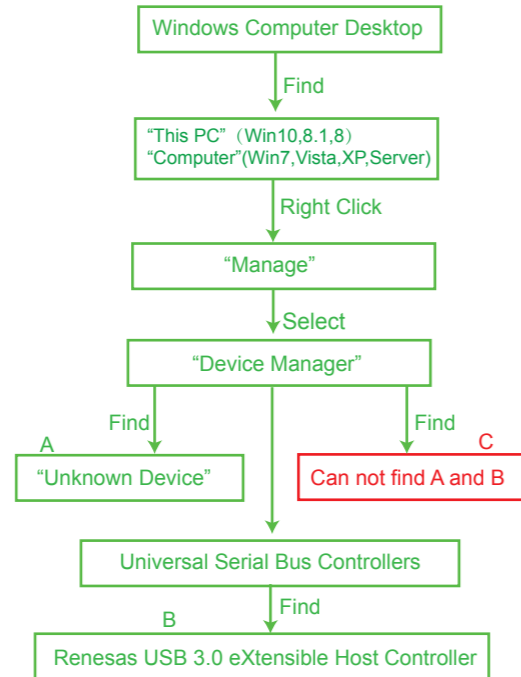


Added on USB Ports

### Check If USB Card Works on Computers:

1.Users can plug universal USB device such as USB flash drives,keyboards,mouse etc.Check if computer can find these device.If system read USB device means no need to install driver,can use these added on USB 3.0 ports now.

2.Find this added on USB card hardwae in Windows system "Device Manager" and check if system read it.



A,Means PCs find hardware correctly need to install driver.  
B,Means USB card hardware correctly placed and system load driver already can use it now.  
C.Means PCs can not find the added on USB card hardware. Users need to re-plug USB card on motherboard PCIE slot, and better change to an active PCIE slot for USB card.Users can contact us get tech-support with order number and mother board model number at support@febsmart.com.

### Install Driver on Desktop PCs:

- FS-U7-Pro and FS-U7S-Pro are based on Renesas USB 3.0 host controller serial.These models share installation steps on Windows 10,8.1,8,7,XP and Windows Server.
- Most of Windows 10,8.1,8(32/64bit) and Windows server 2012,2012R2,2016,2019 system will load driver automatically. If it can not read on your system and read "Unknown Device" in Windows "Device Manager",no worry just install driver.
- Most of Windows XP,Vista,7(32/64bit) and Windows server 2003,2003R2,2008,2008R2(32/64bit) system will read as "Unknown Device" in "Device Manager",install driver please it will works then.

Step1,Open Mini CD find file folder"Renesas" find "USB Card .exe" or download driver from our site www.febsmart.com



Step2,Complete driver installation.

- Double right-click"USB Card"

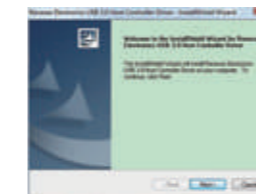


USB Card

- Waiting files ready to install.



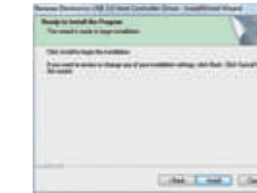
- Click "Next"



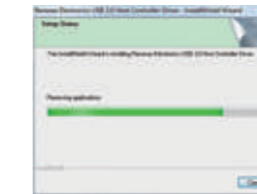
- Accept the license,click"Next"



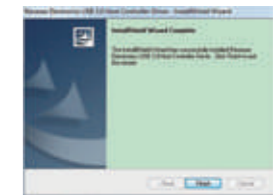
- Click "install"



- Waiting for driver installation.



- Click "Finish",and start using the new USB ports.



### User FAQ:

- How many USB device will be lighted up simultaneously?  
Actually with FebSmart Self-Powered technology users can run high power consumption device in all USB ports without issues.
- Why my USB hard drive and flash drives transfer data at a low speed than official speed?  
1.If USB flash drives is USB 2.0 device,will runs in 2.0 speed. Make sure it is a USB 3.0 device will pick a USB 3.0 speed.  
2.USB external Hard Disks are in different speed between SSD and HDD. SSD transfers much faster than HDD.  
3.Is this USB ports still support external USB HUBs or other extension device?  
Yes,this is a Host Controller USB extensible card,will allow connect to extended USB device.
- Where I can get tech support,driver download and warranty?  
Contact Us:support@febsmart.com  
Driver Download:www.febsmart.com