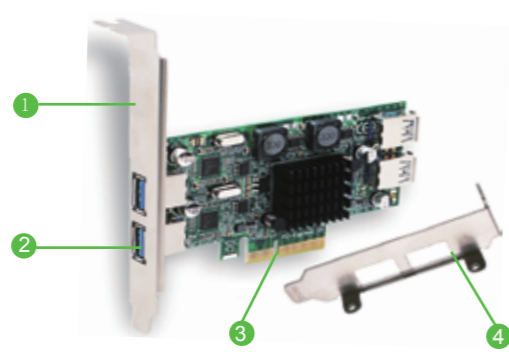




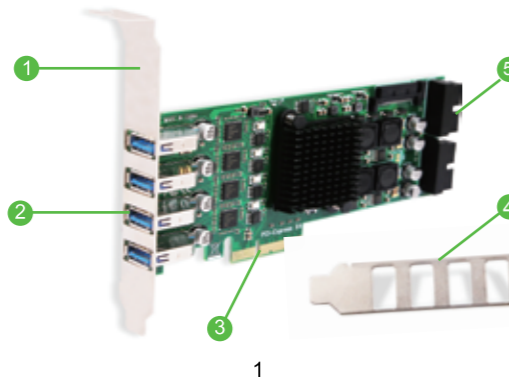
## PCI Express USB 3.0 Expansion Card

•FS-2C-U4-Pro •FS-4C-U8S-Pro  
Site:www.febsmart.com Email:support@febsmart.com

FS-2C-U4-Pro



FS-4C-U8S-Pro



- ① Standard Size Bracket
- ② USB 3.0 Interface
- ③ PCI Express X4 Interface
- ④ Low profile bracket
- ⑤ 19Pin USB 3.0 Header(Each 2 Ports USB 3.0 Interface)

### Product Description:

**FS-2C-U4-Pro** provide 2 dedicated USB 3.0 channel 5Gbps on 4 USB 3.0 ports,allow users get 2ports external and 2ports internal USB 3.0 with 10Gbps total bandwidth.Build FebSmart Self-Powered Technology for high power consuming device such as HDD,SSD or industrial equipments.Based on single ASMedia ASM1806 10Gbps bridge chipset and dual Renesas NEC 5Gbps USB 3.0 chiset.PCIE X4 design works on PCIE X4,X8X16 slot,not for PCIE X1 slot.Packed with low profile and full size bracket works on slim and standard size PCs.

**FS-4C-U8S-Pro** provide 4 dedicated channel 5Gbps on 8 USB 3.0 ports,allow users get 4 ports external and 4 ports internal USB 3.0 with 20Gbps total bandwidth.Build with Feb-Smart Self-Powered Technology for high power consuming device such as HDD or industrial equipments.Based on single ASMedia ASM1812 20Gbps bridge chipset and 4X Renesas NEC 5Gbps USB 3.0 chipset.PCIE X4 design works on PCIE X4,X8X16 slot,not for PCIE X1 slot.Packed with low profile and full size bracket works on slim and standard size desktop computers.

### System Requirements:

Driver free on Windows 10,8.1,8(32/64bit) systems,Need to Install driver on Windows Server,XP,7,Vista(32/64bit)system.

### FebSmart Self-Powered Technology

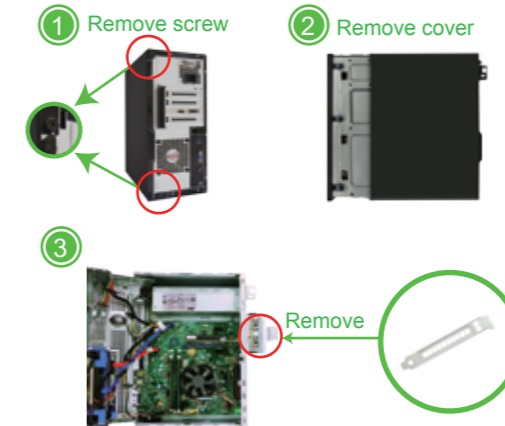
FebSmart Self-Powered Technology is a new solution to add more power supply on USB expansion cards.The old version PCI Express USB cards need to plug a power cable from desktop computers power control center.Even users put power cable in computer power source sometime it still lack power due to power limitation.PCI express slot can provide 75W max almost 12V/6.25A power in total.We add a voltage transformer chip on each USB 3.0 channel (include 1 external and 1 internal USB port) transfer 15V to 5V and provide each channel 3A max power supply.In other words each USB channel 2 ports will get 5V/3A 15W for connected USB 3.0 devices.Most of high power-consuming devices just need 4~8W which means this USB expansion card can be running few the high power-consuming device simultaneously in high speed.To protect data device and users data we build safety electric circuit protector on each USB port.Do not worry data loss or burn data device.Add superspeed,most safe and easy install USB card on desktop computers.

### Package List:

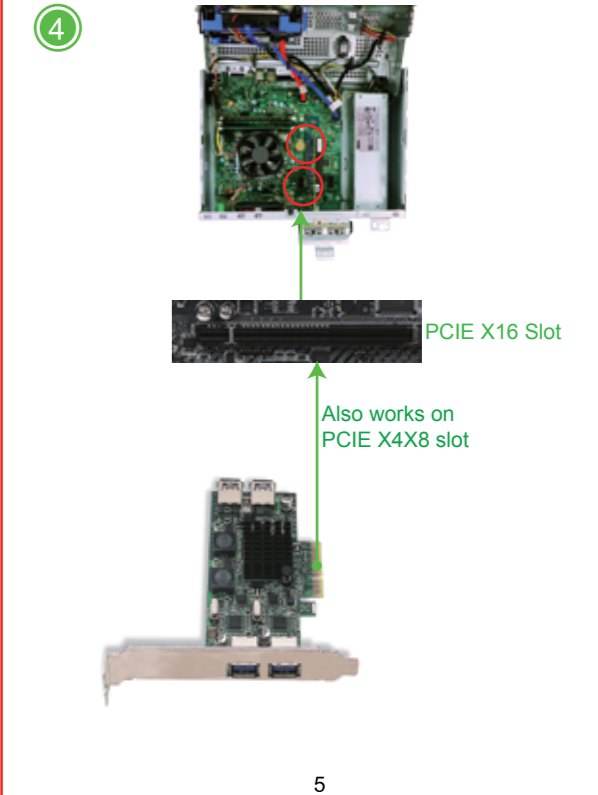
- |                       |                       |
|-----------------------|-----------------------|
| <b>FS-2C-U4-Pro:</b>  | <b>FS-4C-U8S-Pro</b>  |
| 1XFS-2C-U4-Pro        | 1XFS-4C-U8S-Pro       |
| 1XUser Manual         | 1XUser Manual         |
| 1XMini CD             | 1XMini CD             |
| 1XLow Profile Bracket | 1XLow Profile Bracket |

### Add USB Card on Desktop PCs:

**Step1**,Switch OFF PC,unplug computer from main socket,unplug power cord and other connected peripherals.Remove the cover from computer case.



**Step2**,Find correct PCI Express slot from motherboard, insert USB 3.0 card into an empty PCI-E slot.



**Step3**,Reattach the computer cover,and put back removed peripherals,power on desktop computer.

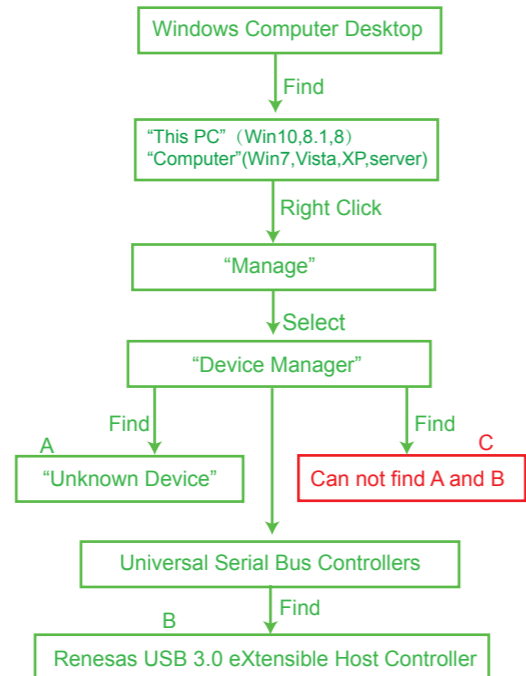


Added on USB Ports

### Check If USB Card Works on Computers:

1.Users can plug universal USB device such as USB flash drives,keyboards,mouse etc.Check if computer can find these device.If system read USB device means no need to install driver,can use these added on USB 3.0 ports now.

2.Find this added on USB card hardwae in Windows system "Device Manager" and check if system read it.



**A**,Means PCs find hardware correctly need to install driver.  
**B**,Means USB card hardware was detected correctly and system load driver already can use it now.  
**C**,Means PCs can not find the added on USB card and not load driver for USB card.Users need to re-plug USB card on motherboard PCIE slot,and better change to an active PCIE slot for USB card.

### Install Driver on Desktop PCs:

1.FS-2C-U4-Pro and FS-4C-U8S-Pro are based on Renesas NEC host coontroller serial chipset and ASMedia bridge chipset.These models share same installation steps on Windows 10,8.1,8,7,XP and Windows Server (32/64bit).

2.Most of Windows 10,8.1,8(32/64bit) and Windows server 2012,2012R2,2016,2019 system will load driver automatically.If it can not read on your system and read "Unknown Device" in Windows "Device Manager",no worry just install driver.

3.Most of Windows XP,Vista,7(32/64bit) and Windows server 2003,2003R2,2008,2008R2(32/64bit) system will read as "Unknown Device" in "Device Manager",install driver please it will works.

**Step1**.Open Mini CD find file folder"Renesas" find "USB Card" or download driver from our sit www.febsmart.com



**Step2**.Complete driver installation.

1.Doule right-click"USB Card"

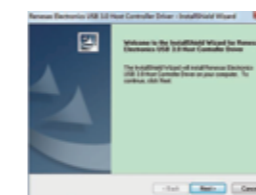


USB Card

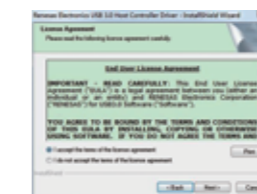
2.Waiting files ready to install.



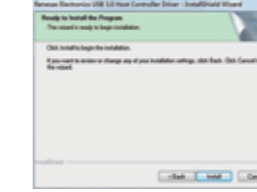
3.Click "Next"



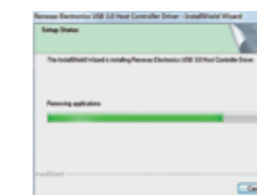
4.Accept the license,click"Next"



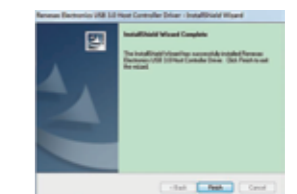
5.Click "install"



6.Waiting for driver installation.



7.Click "Finish",and start using the new USB ports.



### User FAQ:

- 1.How many USB device can runs simultaneously?  
Actually with FebSmart Self-Powered technology users can run high power consumption device in all USB ports no issues.
- 2.Why my USB hard drive and flash drives transfer data at a low speed than official speed?  
1.If USB flash drives is USB 2.0 device,will runs in 2.0 speed. Make sure it is a USB 3.0 device will pick a USB 3.0 speed.  
2.USB external Hard Disks are in different speed between SSD and HDD. SSD transfers much faster than HDD.
- 3.Is this USB ports still support external USB HUBS or other extension device?  
Yes,this is a Host Controller USB extensible card,will allow connect to extended USB device.
- 4.Where I can get tech support,driver download and warranty?  
Contact Us:support@febsmart.com  
Driver download:www.fensmart.com